

SolarVue®

Laminated Coated Safety Glass

DESCRIPTION

SolarVue® provides medium solar control and a low-reflective appearance in a range of colours.

TYPICAL APPLICATIONS

- Curtain walls to office blocks & entrance lobbies
- Solar energy control
- Glazed partitions and screens

BENEFITS & FEATURES

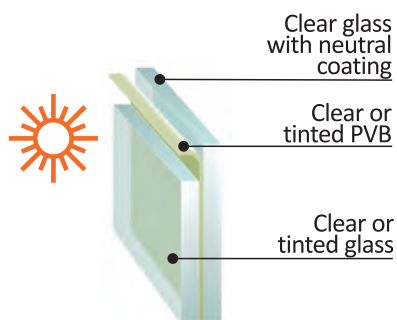
- Glare reduction in buildings
- Reduced energy costs due to solar control properties
- High natural light transmission

VARIATIONS

- SolarVue® can be custom-manufactured to meet various safety, security and noise reduction standards.
- All SolarVue® variations are also recognised as safety glazing products.

COATING DENSITIES

- High Light (HL)
- Extra High Light (XHL)
- Super High Light (SHL)*
- Mega High Light (MHL)*



* Available in SolarVue® Neutral only.

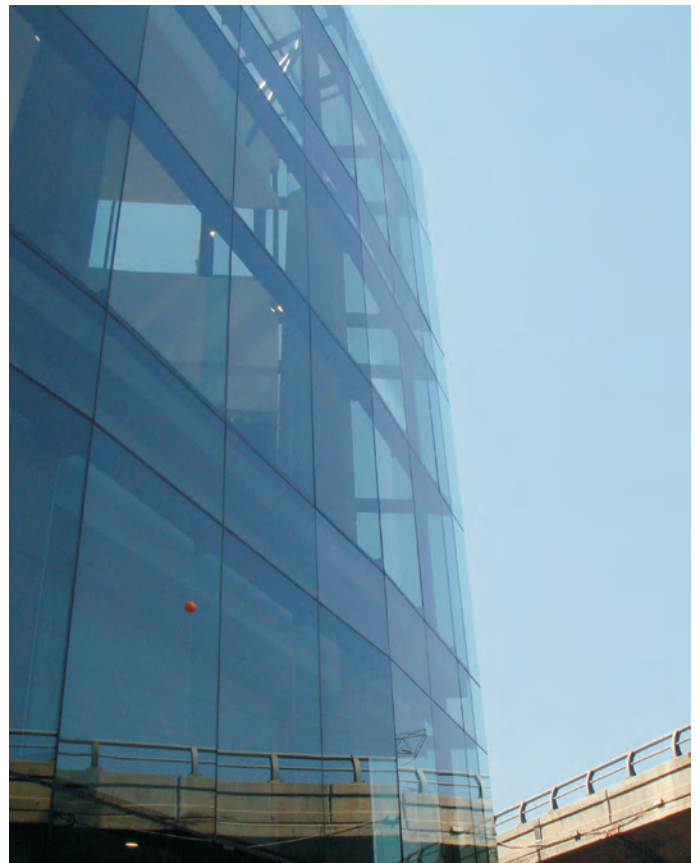
LEGISLATION AND STANDARDS

SolarVue® is a PVB laminated safety glass complying with SANS 1263.

- Normal Strength (NS) - complies with SANS 1263 Part 1
- High Penetration Resistant (HPR) - complies with SANS 1263 Part 1
- High Impact (HI)- complies with SANS 1263 Part 2

SIZES AND THICKNESSES

Sizes and thicknesses are available on request. Recommended maximum size will depend on application and design load.



Technical Information

(Performance Data)

SolarVue®

Laminated Safety Glass		IGDB	Visible Light		Solar Energy							Noise
			Trans.	Reflect.	Total Elim.	Reflect.	Absorpt.	Direct Trans.	S.H.G.C	Shading Coeff.	U-value (Centre of glass) W/m ² .K	S.T.L. (dB)
Neutral	HL	16060	47	12	46	11	50	39	0.54	0.62	5.80	33
Neutral	XHL	16097	56	10	39	9	44	47	0.61	0.70	5.80	33
Neutral	SHL	16083	61	9	36	8	40	52	0.64	0.74	5.80	33
Neutral	MHL	16070	68	7	31	7	35	58	0.69	0.80	5.80	33
Aquamarine	HL	16103	39	10	48	10	56	34	0.52	0.59	5.80	33
Aquamarine	XHL	16089	48	8	42	8	50	42	0.58	0.66	5.80	33
Blue	HL	16117	41	11	46	10	53	37	0.54	0.62	5.80	33
Blue	XHL	160951	46	8	42	8	50	42	0.58	0.67	5.80	33
Bronze	HL	16057	28	7	57	6	75	19	0.43	0.50	5.80	33
Bronze	XHL	16093	35	6	47	6	59	35	0.53	0.61	5.80	33
Grey	HL	16059	24	7	53	8	66	26	0.47	0.54	5.80	33
Grey	XHL	16095	29	6	48	6	61	33	0.52	0.60	5.80	33
Regal Blue	HL	16061	33	8	49	9	58	33	0.51	0.59	5.80	33
Regal Blue	XHL	16099	39	7	43	7	53	40	0.57	0.65	5.80	33
Arctic Snow	HL	16116	33	16	54	14	58	28	0.46	0.53	5.80	33
Arctic Snow	XHL	16106	41	13	48	11	54	35	0.52	0.60	5.80	33
Serene Green	HL	16062	42	9	53	6	69	25	0.47	0.54	5.80	33
Serene Green	XHL	16101	49	9	51	9	61	30	0.49	0.57	5.80	33

Note:

The performance data in the above table is calculated in accordance with NFRC 100-2010, and given as an indication only.

Actual values may differ due to manufacturing tolerances.

S.H.G.C. and U-values quoted are "Centre of Glass", and exclude any frame effects. SANS 204 should be consulted for total fenestration values.

Thermal safety warranties are available on application.

Sound Transmission Loss (S.T.L.) values are mean, measured at the centre frequency of the 1/3 octave band, over the frequency range 100 to 5000Hz, centre of glass.

*IGDB: International Glazing Data Base

**SAGDB: South African Glass Data Base