

Solar E® & Solar E® Plus

Low Emissivity Single Glazed

DESCRIPTION

Solar E® is a single glazed low emissivity glass designed to provide superior insulation along with solar control in one product.

TYPICAL APPLICATIONS

- Where additional insulation is required
- Medium solar control

BENEFITS & FEATURES

- Superior insulation in single glazing.

VARIATIONS

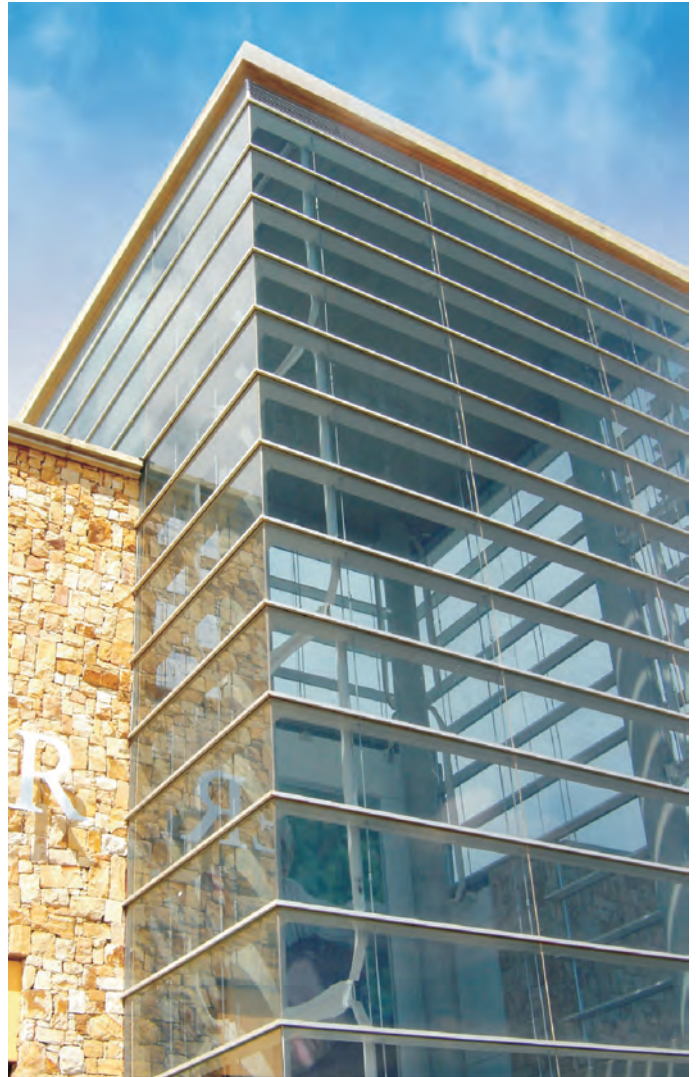
- Various colour options are available.

LEGISLATION AND STANDARDS

Solar E® will comply with SANS 1263 : Part 1 when laminated or toughened (Armourplate®).

SIZES & THICKNESSES

Additional standard stock sizes and thicknesses are available on request. Recommended maximum size will depend on application and design load.



Technical Information

(Performance Data)

Single Glazed Solar E[®], Solar E[®] Plus & Eclipse Advantage[™] Low E

Eclipse Advantage [™] Single Glazed Low E	IGDB	Visible Light		Solar Energy							Noise
		Trans.	Reflect.	Total Elim.	Reflect.	Absorpt.	Direct Trans.	S.H.G.C	Shading Coeff.	U-value (Centre of glass) W/m ² .K	S.T.L. (dB)
Clear	9909	67	26	37	19	23	58	0.63	0.72	3.83	29
Blue Green	9907	56	19	54	11	54	35	0.46	0.53	3.83	29
Bronze	9908	38	11	54	10	55	35	0.46	0.53	3.83	29
Grey	9911	32	10	58	9	62	29	0.42	0.48	3.83	29
Evergreen	9910	47	16	63	8	69	23	0.37	0.43	3.83	29
Arctic Blue	9906	48	12	63	8	69	23	0.37	0.43	3.83	29

Solar E [®] Single Glazed Low E	IGDB	Visible Light		Solar Energy							Noise
		Trans.	Reflect.	Total Elim.	Reflect.	Absorpt.	Direct Trans.	S.H.G.C	Shading Coeff.	U-value (Centre of glass) W/m ² .K	S.T.L. (dB)
Clear	9935	60	8	47	7	49	44	0.53	0.61	3.68	29
Evergreen	9954	45	6	65	5	75	20	0.35	0.40	3.68	29

Solar E [®] Plus Single Glazed Low E	IGDB	Visible Light		Solar Energy							Noise
		Trans.	Reflect.	Total Elim.	Reflect.	Absorpt.	Direct Trans.	S.H.G.C	Shading Coeff.	U-value (Centre of glass) W/m ² .K	S.T.L. (dB)
Grey	9967	24	5	66	5	75	20	0.34	0.39	3.69	29
Blue Green	9963	41	6	62	5	71	24	0.38	0.44	3.69	29
Arctic Blue	9962	31	5	68	5	78	17	0.32	0.37	3.69	29
Graphite Blue	9968	35	6	59	5	67	28	0.41	0.47	3.69	29

Note:

The performance data in the above table is calculated in accordance with NFRC 100-2010, and given as an indication only.

Actual values may differ due to manufacturing tolerances.

S.H.G.C. and U-values quoted are "Centre of Glass", and exclude any frame effects. SANS 204 should be consulted for total fenestration values.

Thermal safety warranties are available on application.

Sound Transmission Loss (S.T.L.) values are mean, measured at the centre frequency of the 1/3 octave band, over the frequency range 100 to 5000Hz, centre of glass.

*IGDB: International Glazing Data Base

**SAGDB: South African Glass Data Base